

MADE FOR PROFESSIONALS

Designed to work reliably in difficult conditions. Meets professional's needs. Made of stainless steel. IP 54.

HIGH PERFORMANCE

They work wherever powerful, efficient and reliable heating is needed.

HIGH MOBILITY

Ergonomic handles combined with a low device weight makes moving the heater easy.

HEATERS

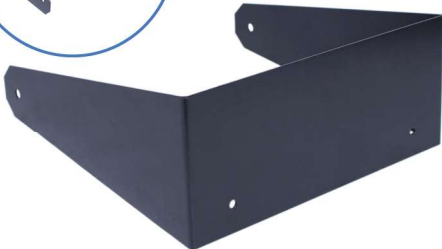
DANIA LB IP54 space heaters

inelco
heaters
keeps you warm



DANIA LB IP54

professional quality / IP54 - can work in a dusty environment / 9kW heat output / 3 power levels + ventilator mode / adjustable thermostat / external thermostat connection on PCB / air flow 700 or 1000m³/h / power supply 3x400V/50Hz / power cord 1m / 5 pin male plug



DEDICATED WALL MOUNT BRACKET

made of steel / powder coated / product no 23200201

TECHNICAL DATA	LB IP54 TYP 1882	LB IP54 TYP 1880
Output [kW]	1,8/5,4/9	1,8/5,4/9
Output [kcal/h]	1548/4643/7739	1548/4643/7739
Output [kJ/h]	6480/19440/32400	6480/19440/32400
Mains voltage [V]	3x400	3x230
Max. mains current [A]	16	28
Fan diameter [mm]	300	300
Air flow rate [m ³ /h]	700/1000	700/1000
Dimensions (HxWxD) [mm]	670x600x2450	670x600x2450
Weight [kg]	18	18
IP protection class	54	54